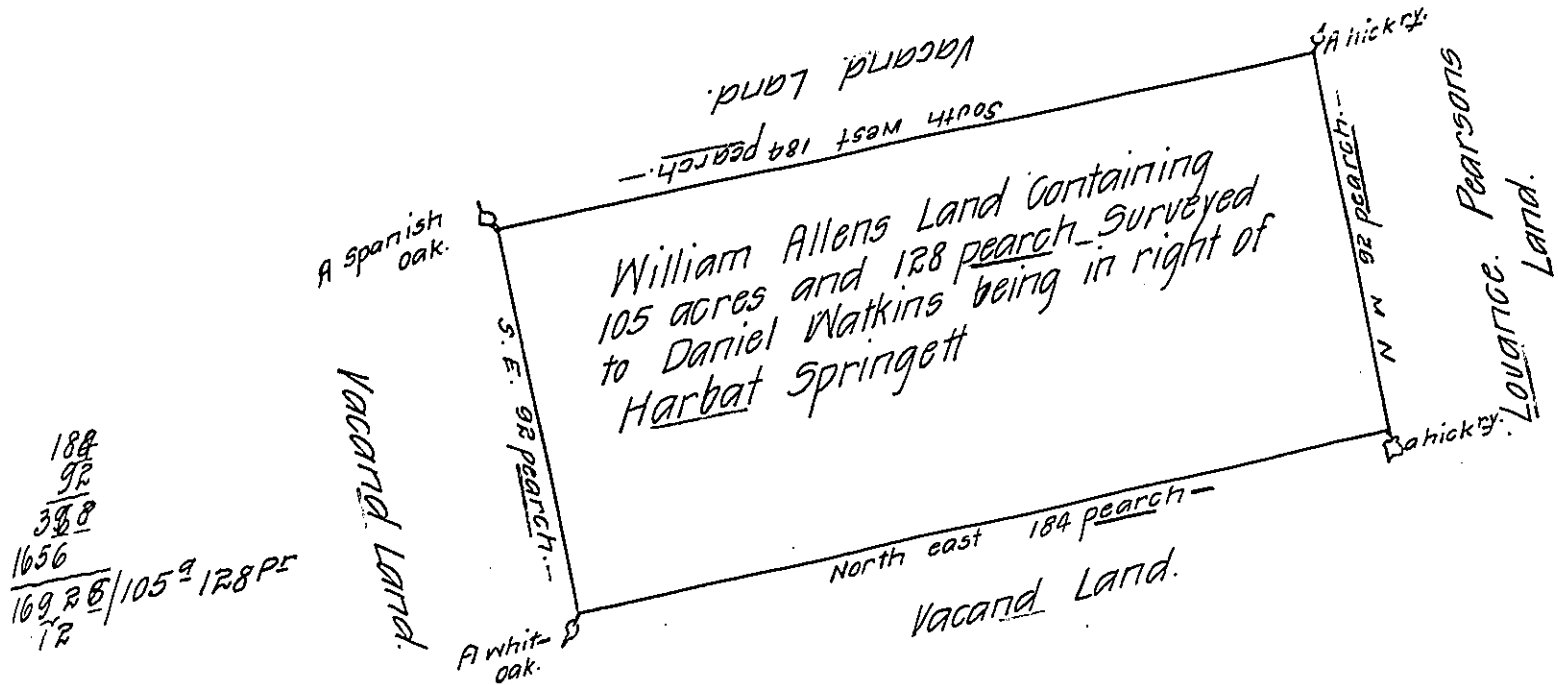


No. 10.



Surveyed by vertue of an order from William Allen to me directed to Daniel Watkins This Tract of land Beginning at a hickory standing in the Line of Lawrence pearsons land then north west ninety two perch by the said pearsons land to a marked hickory then south west one hundred and eighty ^{four} perch by vacand land to a spanish oak then south east ninety two perch by vacand land to a whit-oak then north east one hundred and eighty four perches to the place of beginning containing one hundred and five acres and one hundred and twenty eight perch- Lying in the Township of Plumstead in Bucks County being part of Herbet Springett Right surveyed the 9 day of ~~May~~ ^{October} in the year 1730 by John Chapman

Returned into the Secretary's Office
the — day of February 1735/6.

IN TESTIMONY that the above is a copy of the original remaining on file in the Department of Internal Affairs of Pennsylvania, made conformably to an Act of Assembly approved the 16th day of February, 1833, I have hereunto set my Hand and caused the Seal of said Department to be affixed at Harrisburg, this fifth day of November 1910.

Henry Honck
Secretary of Internal Affairs.